




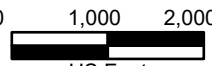
Legend:

-  Study Corridor
-  Drain Flow

N



0 1,000 2,000



US Feet

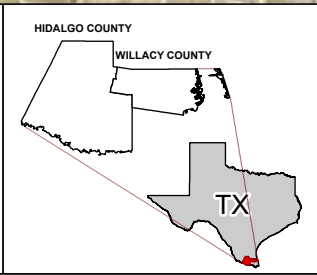


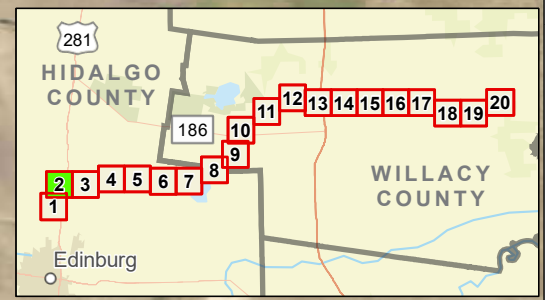
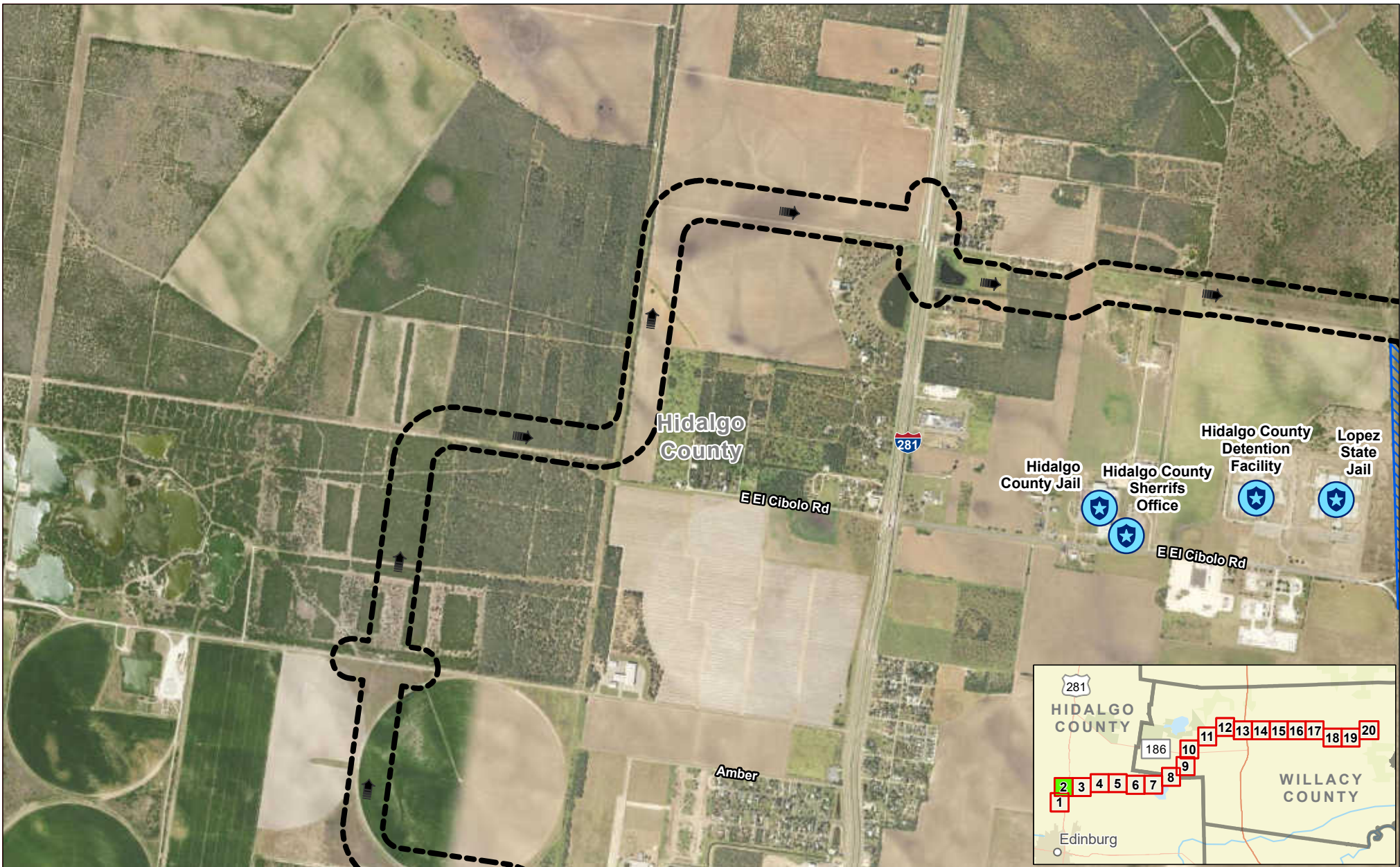


Exhibit 17 Alternative 2 Constraints Map Sheet 1 of 20 Raymondville Drain Project

Author : Joel F. Aguirre	Updated : 12/14/2023
--------------------------	----------------------

DISCLAIMER: RRP Consulting Engineers makes no guarantees as to the accuracy of data used in the construction of this map.

Path: S:\project\440800_Prop\Inventory\GIS\PDF_Books\Exh_Sheet_001.aprx



Legend:

- Study Corridor
- Drain Flow
- Proposed Detention Basin
- Law Enforcement Facility

N

0 1,000 2,000

US Feet

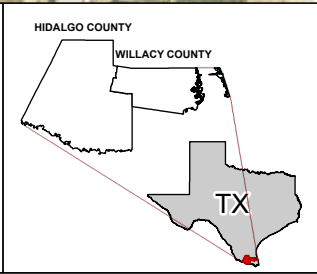
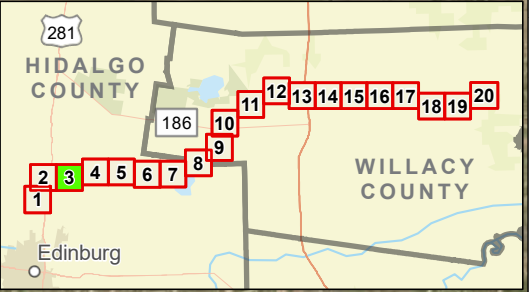


Exhibit 17 Alternative 2 Constraints Map Sheet 2 of 20 Raymondville Drain Project

Author : Joel F. Aguirre	Updated : 12/14/2023
--------------------------	----------------------

DISCLAIMER: RRP Consulting Engineers makes no guarantees as to the accuracy of data used in the construction of this map.

Path: S:\projects\4408000_ProposedRaymondvilleDrain\Drawings\Exhibit_17_Series.aprx



Legend:

- Study Corridor
- Drain Flow
- Proposed Detention Basin
- Cemetery
- Law Enforcement Facility

N

0 1,000 2,000

US Feet

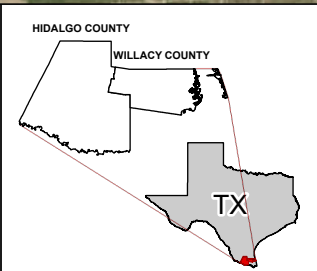
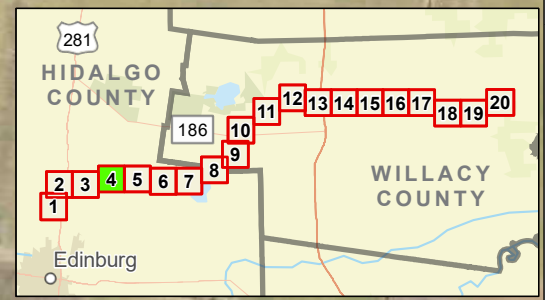
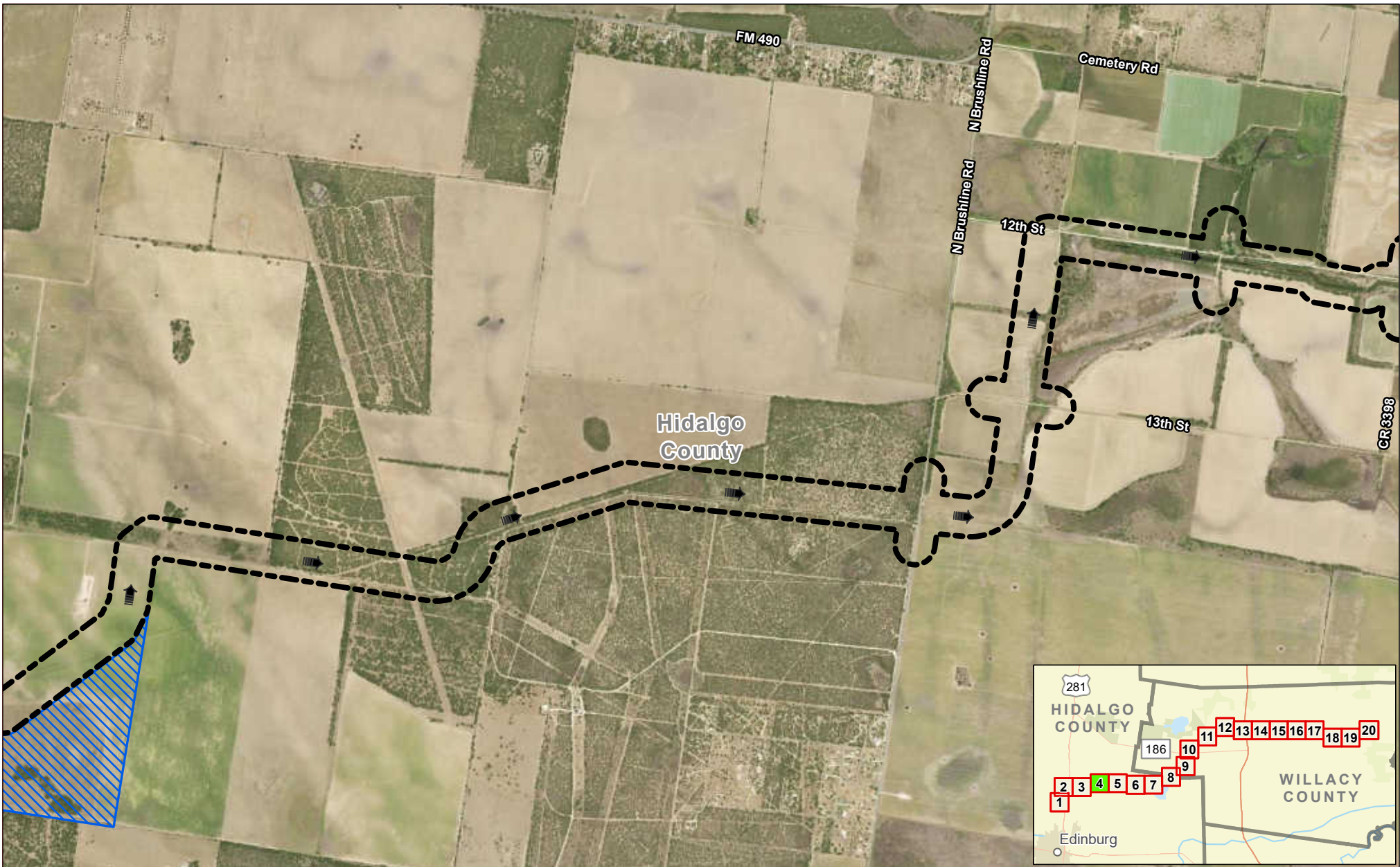


Exhibit 17 Alternative 2 Constraints Map Sheet 3 of 20 Raymondville Drain Project

Author : Joel F. Aguirre Updated : 12/14/2023

DISCLAIMER: RRP Consulting Engineers makes no guarantees as to the accuracy of data used in the construction of this map.

Path: S:\project\440800_ProposedRaymondvilleDrain\Drawings\Drawings.dwg



Legend:

- Study Corridor
- Drain Flow
- Proposed Detention Basin

N

0 1,000 2,000

US Feet

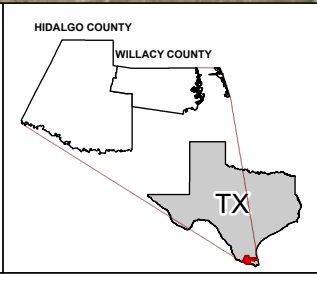
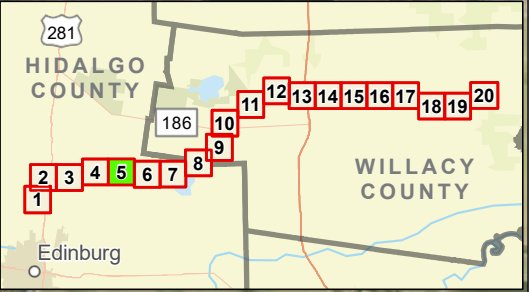


Exhibit 17 Alternative 2 Constraints Map Sheet 4 of 20 Raymondville Drain Project

Author : Joel F. Aguirre	Updated : 12/14/2023
DISCLAIMER: RRP Consulting Engineers makes no guarantees as to the accuracy of data used in the construction of this map.	

Path: S:\project\440800_ProposedRaymondvilleDrain\Drawings\Sheet_04.dwg



Legend:

- Study Corridor
- Drain Flow
- Cemetery

N

0 1,000 2,000

US Feet

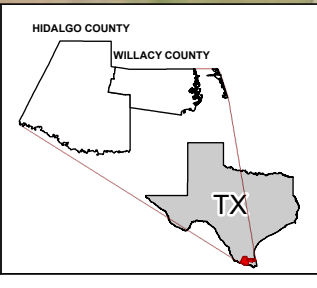
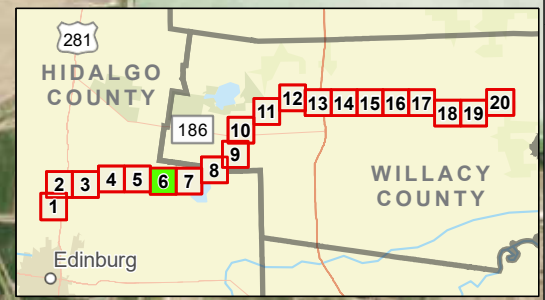


Exhibit 17 Alternative 2 Constraints Map Sheet 5 of 20 Raymondville Drain Project

Author : Joel F. Aguirre	Updated : 12/14/2023
--------------------------	----------------------

DISCLAIMER: RRP Consulting Engineers makes no guarantees as to the accuracy of data used in the construction of this map.

Path: S:\project\440800_Project\Raymondville\GIS\PDF_Export\Exhibit_Series.aprx



Legend:

- Study Corridor
- Drain Flow
- Cemetery

N

0 1,000 2,000

US Feet

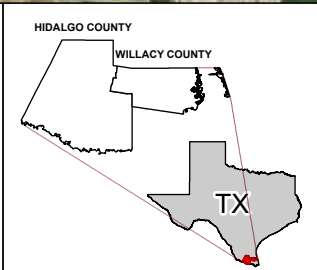
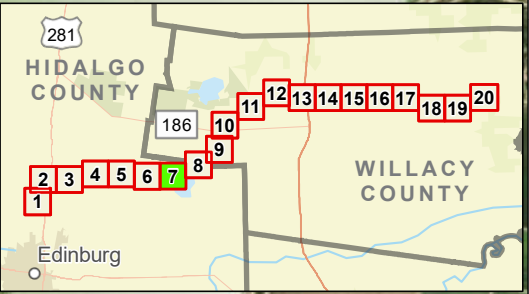


Exhibit 17 Alternative 2 Constraints Map Sheet 6 of 20 Raymondville Drain Project

Author : Joel F. Aguirre Updated : 12/14/2023

DISCLAIMER: RRP Consulting Engineers makes no guarantees as to the accuracy of data used in the construction of this map.

Path: S:\projects\4408000_ProposedRaymondvilleDrain_Drains-Env_Series.aprx



Legend:

- Study Corridor
- Drain Flow
- County Boundary

N

0 1,000 2,000

US Feet

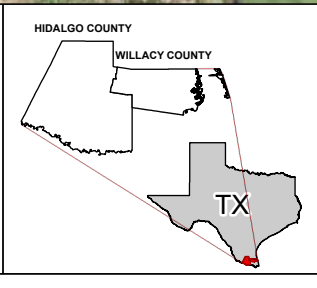
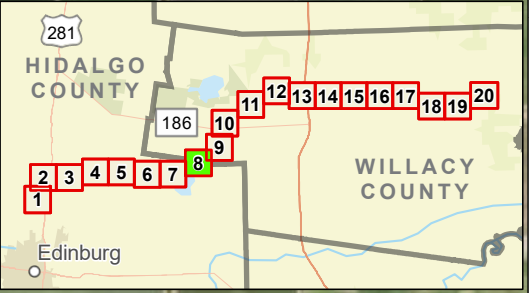
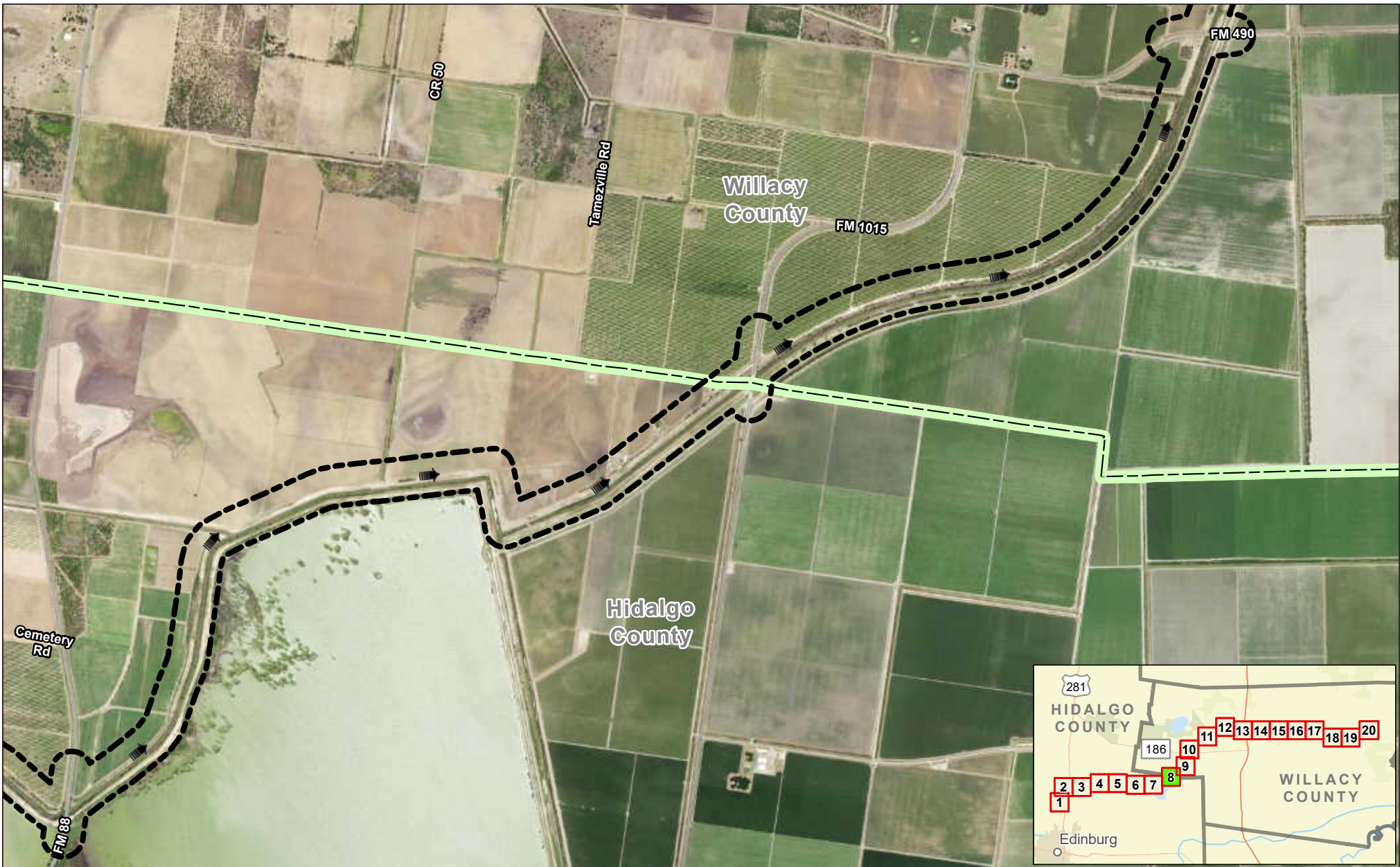


Exhibit 17 Alternative 2 Constraints Map Sheet 7 of 20 Raymondville Drain Project

Author : Joel F. Aguirre	Updated : 12/14/2023
--------------------------	----------------------

DISCLAIMER: RRP Consulting Engineers makes no guarantees as to the accuracy of data used in the construction of this map.

Path: S:\project\440800_Proposed\Raymondville\GIS\PDF_Export\Exhibit_Series.aprx



Legend:

- Study Corridor
- Drain Flow
- County Boundary

N

0 1,000 2,000

US Feet

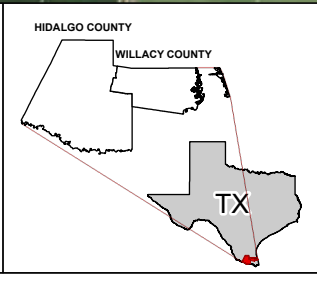
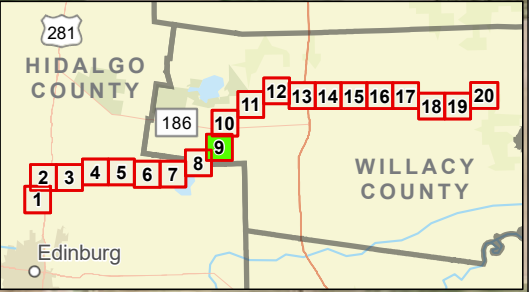
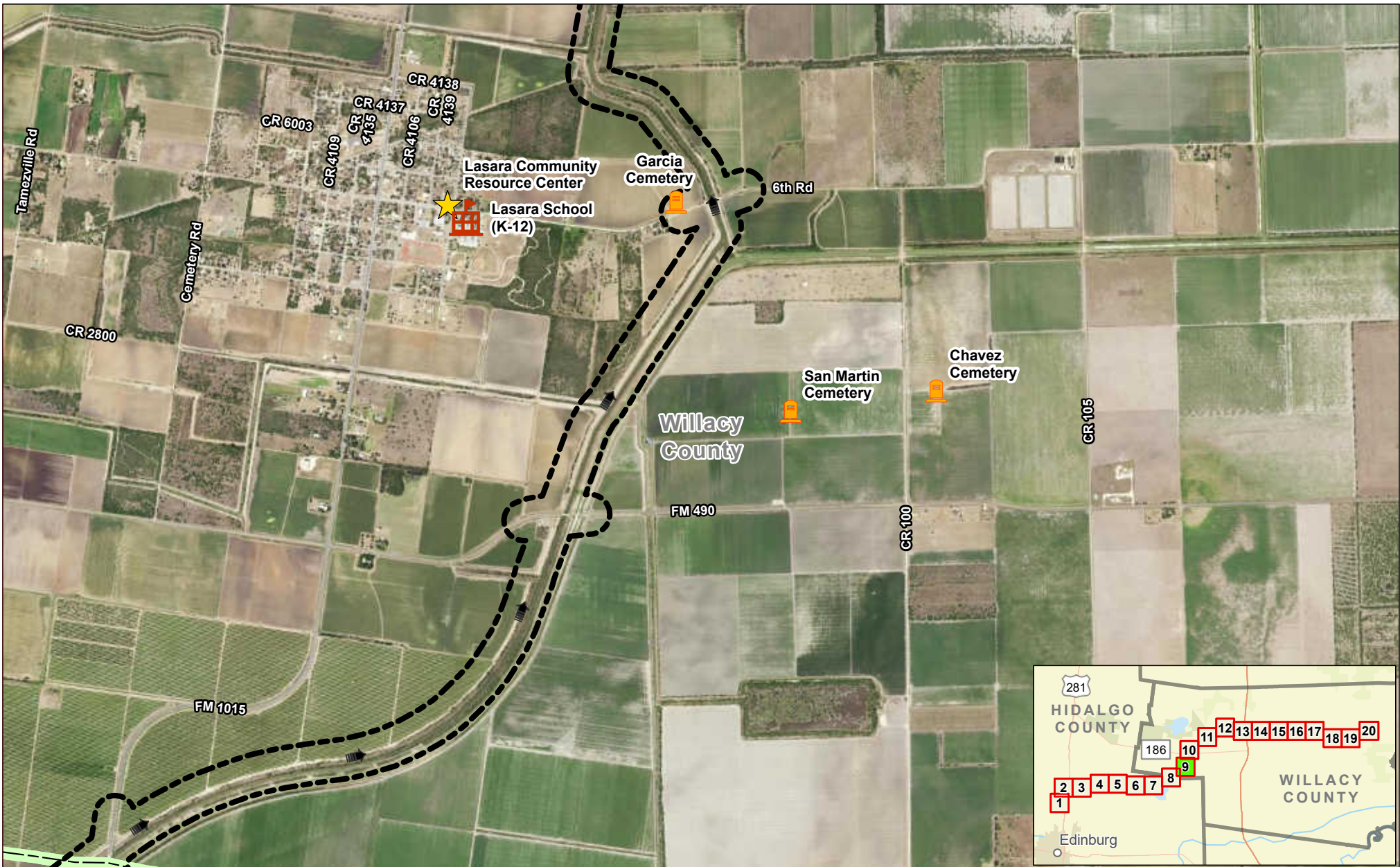


Exhibit 17 Alternative 2 Constraints Map Sheet 8 of 20 Raymondville Drain Project

Author : Joel F. Aguirre	Updated : 12/14/2023
--------------------------	----------------------

DISCLAIMER: RRP Consulting Engineers makes no guarantees as to the accuracy of data used in the construction of this map.

Path: S:\project\440800_Project\Raymondville\GIS\PDF_Export\Exh_17_Sheet_8.aprx



Legend:

- Study Corridor
- Drain Flow
- Cemetery
- Community Center
- Educational Facility
- County Boundary

N

0 1,000 2,000

US Feet

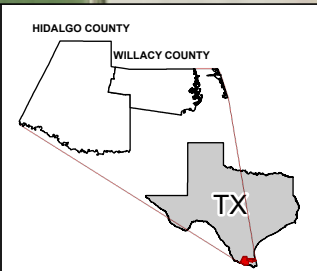
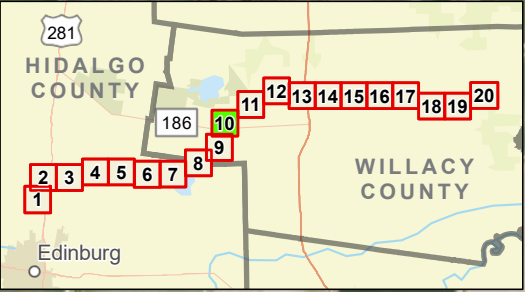


Exhibit 17 Alternative 2 Constraints Map Sheet 9 of 20 Raymondville Drain Project




Author : Joel F. Aguirre Updated : 12/14/2023

DISCLAIMER: RRP Consulting Engineers makes no guarantees as to the accuracy of data used in the construction of this map.

Path: S:\project\4408000_P\ProjectInventory\GIS\FOP_Encls-Encl_Series.aprx



Legend:

-  Study Corridor
-  Drain Flow
-  Cemetery

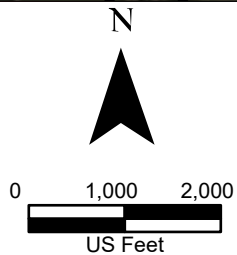
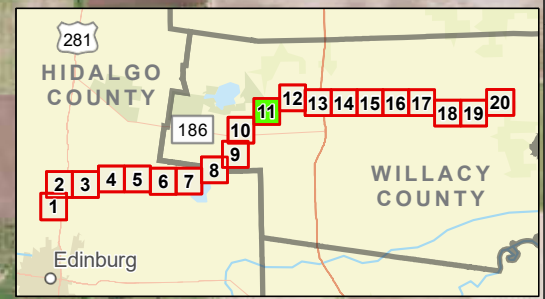
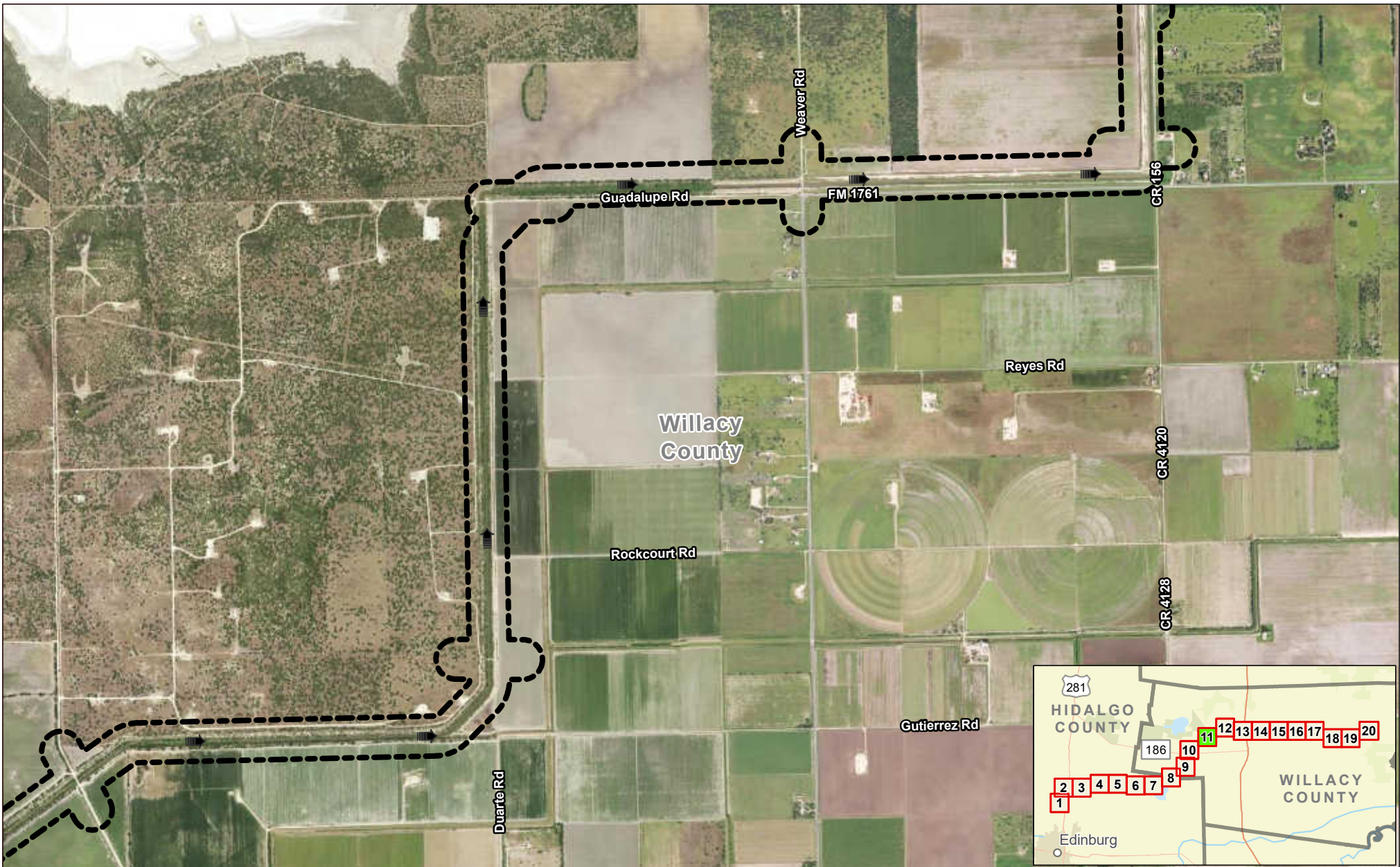




Exhibit 17 Alternative 2 Constraints Map Sheet 10 of 20 Raymondville Drain Project

Author : Joel F. Aguirre Updated : 12/14/2023

DISCLAIMER: RRP Consulting Engineers makes no guarantees as to the accuracy of data used in the construction of this map.



Legend:

-  Study Corridor
-  Drain Flow

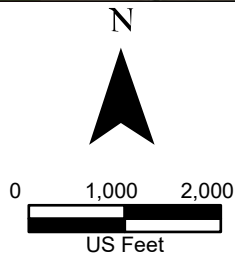
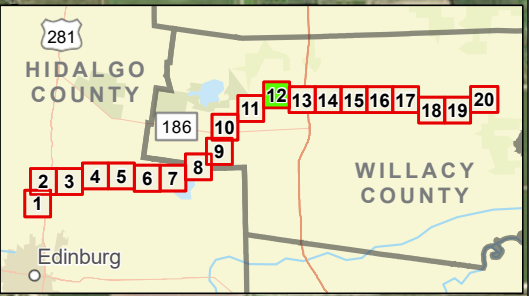
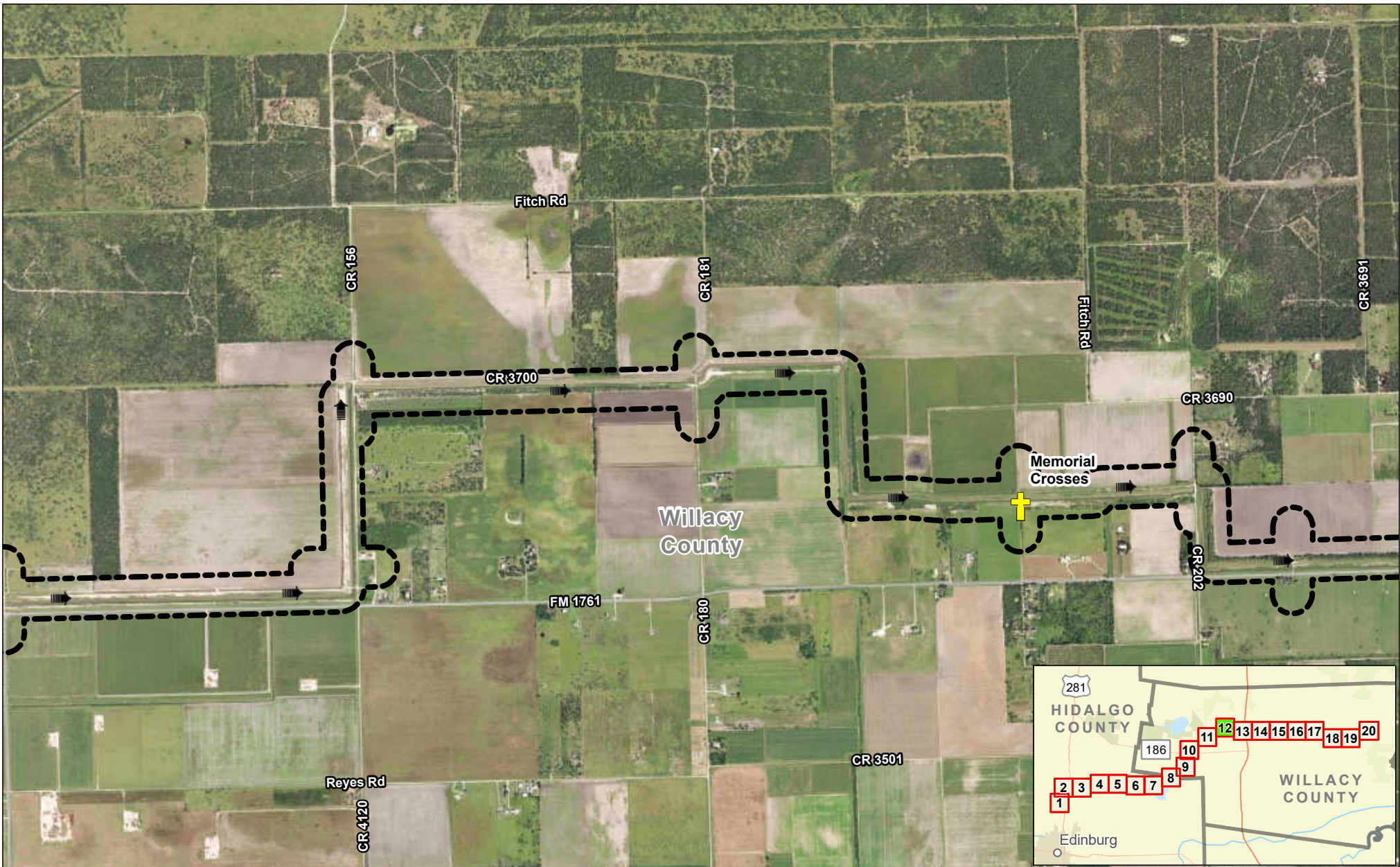


Exhibit 17 Alternative 2 Constraints Map Sheet 11 of 20 Raymondville Drain Project

Author : Joel F. Aguirre Updated : 12/14/2023

DISCLAIMER: RRP Consulting Engineers makes no guarantees as to the accuracy of data used in the construction of this map.



Legend:

- Study Corridor
- Drain Flow
- Memorial

N

0 1,000 2,000

US Feet

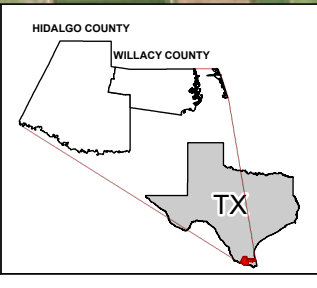
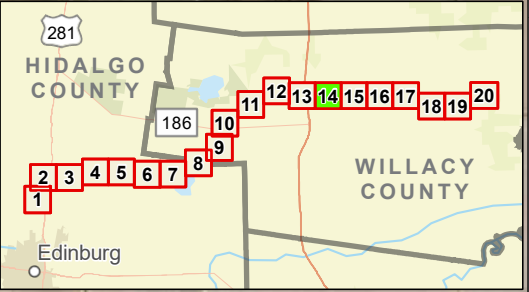


Exhibit 17 Alternative 2 Constraints Map Sheet 12 of 20 Raymondville Drain Project

Author : Joel F. Aguirre	Updated : 12/14/2023
--------------------------	----------------------

DISCLAIMER: RRP Consulting Engineers makes no guarantees as to the accuracy of data used in the construction of this map.

Path: S:\projects\440800_P\ProjectInventory\GIS\FDP_Encls-Encl_Series.aprx



Legend:

- Study Corridor
- Drain Flow
- Wind Turbine

N

0 1,000 2,000

US Feet

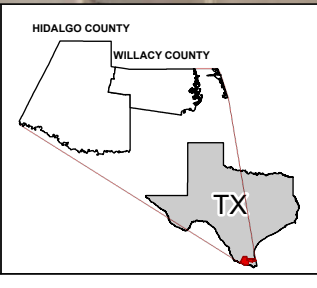
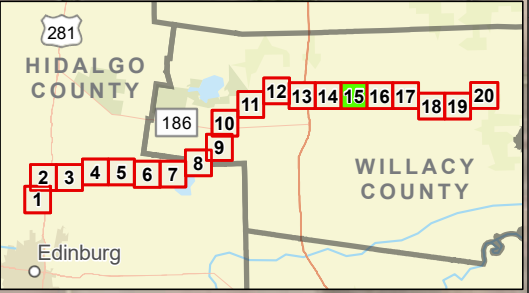
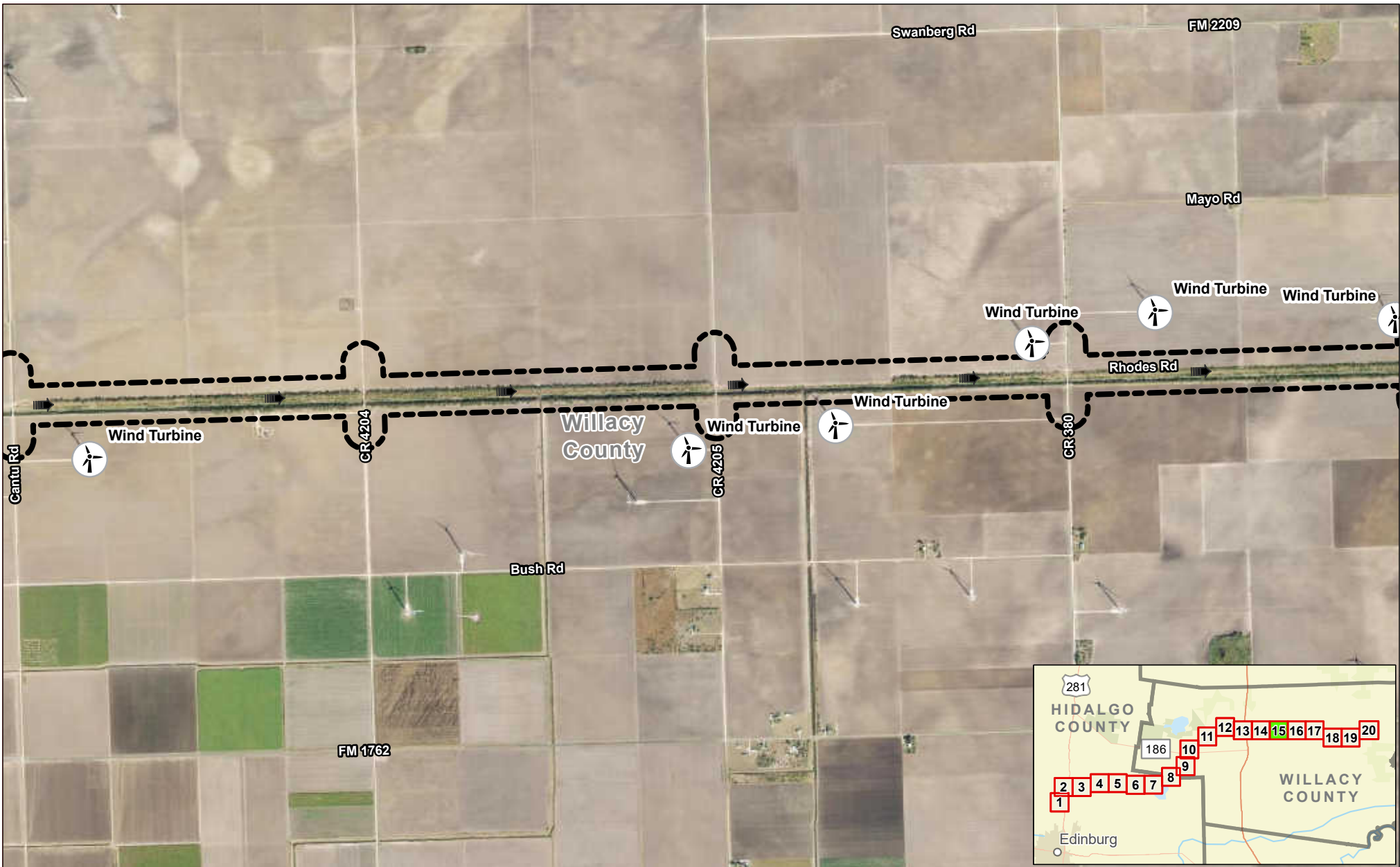


Exhibit 17 Alternative 2 Constraints Map Sheet 14 of 20 Raymondville Drain Project

Author : Joel F. Aguirre	Updated : 12/14/2023
--------------------------	----------------------

DISCLAIMER: RRP Consulting Engineers makes no guarantees as to the accuracy of data used in the construction of this map.

Path: S:\project\4108000_Project\Raymondville\GIS\PDF_Export\End_Series.aprx



Legend:

- Study Corridor
- Drain Flow
- Wind Turbine

N

0 1,000 2,000

US Feet

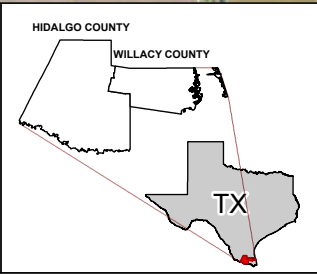
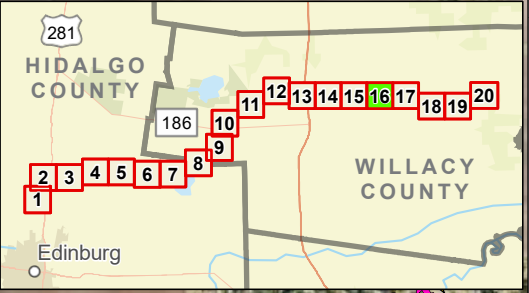


Exhibit 17 Alternative 2 Constraints Map Sheet 15 of 20 Raymondville Drain Project

Author : Joel F. Aguirre	Updated : 12/14/2023
--------------------------	----------------------

DISCLAIMER: RRP Consulting Engineers makes no guarantees as to the accuracy of data used in the construction of this map.

Path: S:\projects\4408000_ProposedRaymondvilleDrain\Drawings\GIS\Drawings\Drawings.aprx



Legend:

- Study Corridor
- Drain Flow
- City Hall
- Community Center
- Fire Department
- Park
- Wind Turbine

N

0 1,000 2,000

US Feet

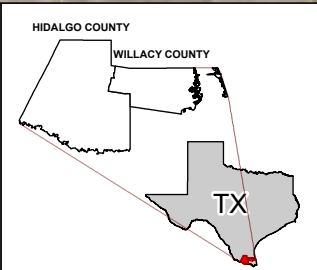
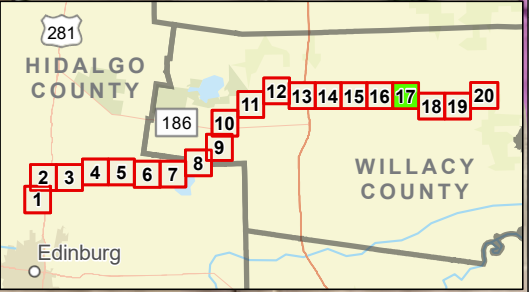


Exhibit 17 Alternative 2 Constraints Map Sheet 16 of 20 Raymondville Drain Project

Author : Joel F. Aguirre Updated : 12/14/2023

DISCLAIMER: RRP Consulting Engineers makes no guarantees as to the accuracy of data used in the construction of this map.

Path: S:\projects\4408000_ProjectRepository\GIS\PDF_Books\Exh_Series.aprx



Legend:

	Study Corridor		Fire Department
	Drain Flow		Park
	El Sauz Ranch		Utility
	City Hall		Wind Turbine
	Community Center		

N

0 1,000 2,000

US Feet

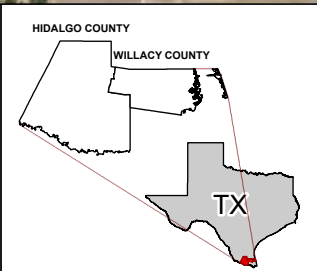
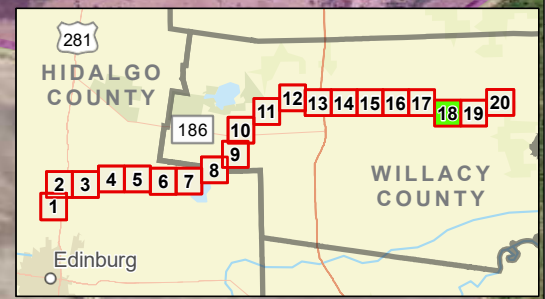
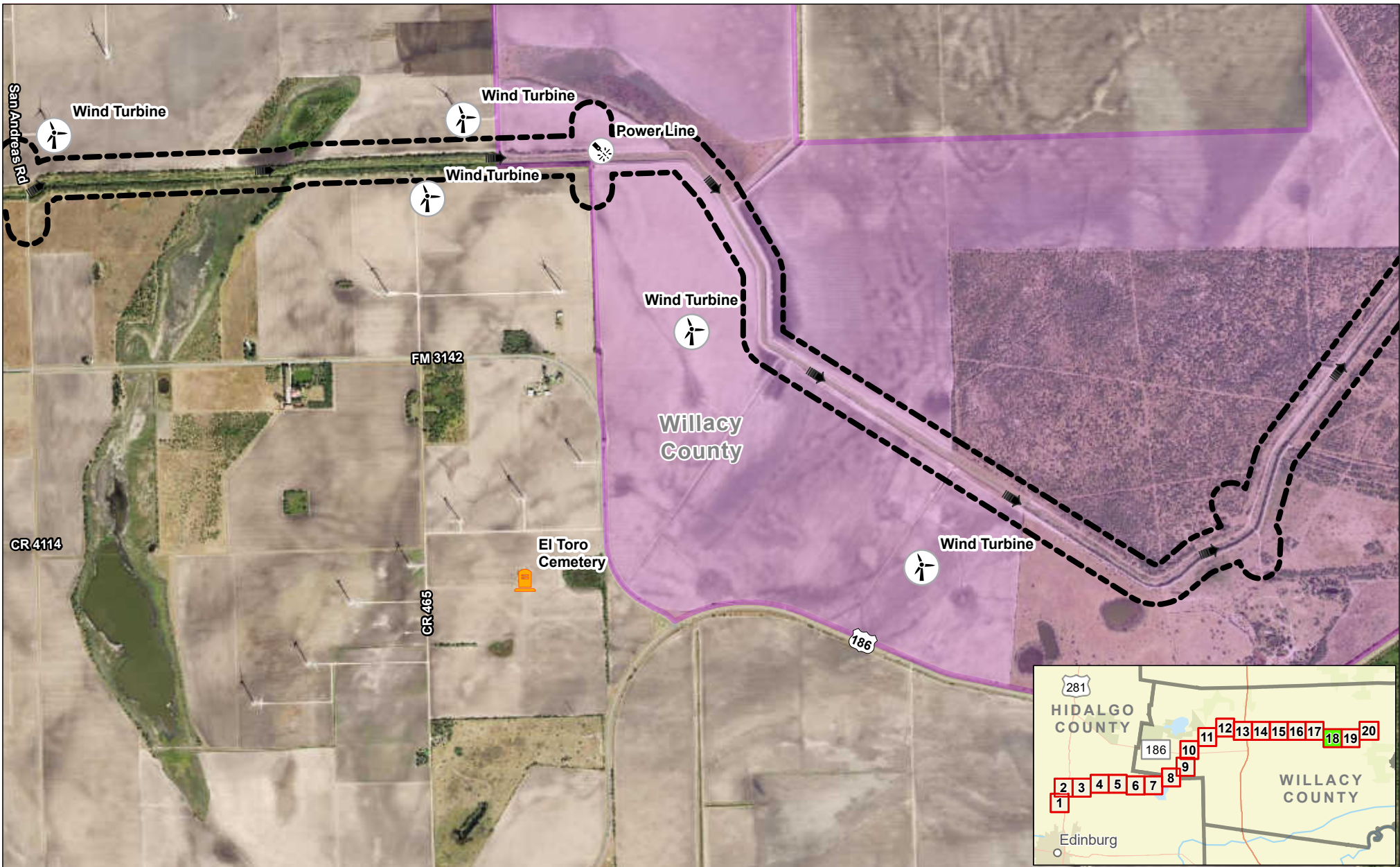


Exhibit 17 Alternative 2 Constraints Map Sheet 17 of 20 Raymondville Drain Project

Author : Joel F. Aguirre	Updated : 12/14/2023
--------------------------	----------------------

DISCLAIMER: RRP Consulting Engineers makes no guarantees as to the accuracy of data used in the construction of this map.

Path: S:\projects\410800_ProjectRepository\GIS\PDF_Books\Exh_Sheet_17.aprx



Legend:

- Study Corridor
- Drain Flow
- El Sauz Ranch
- Cemetery
- Utility
- Wind Turbine

N

0 1,000 2,000

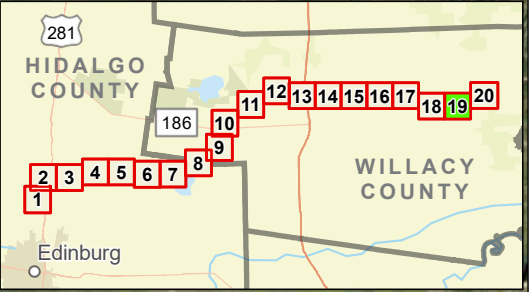
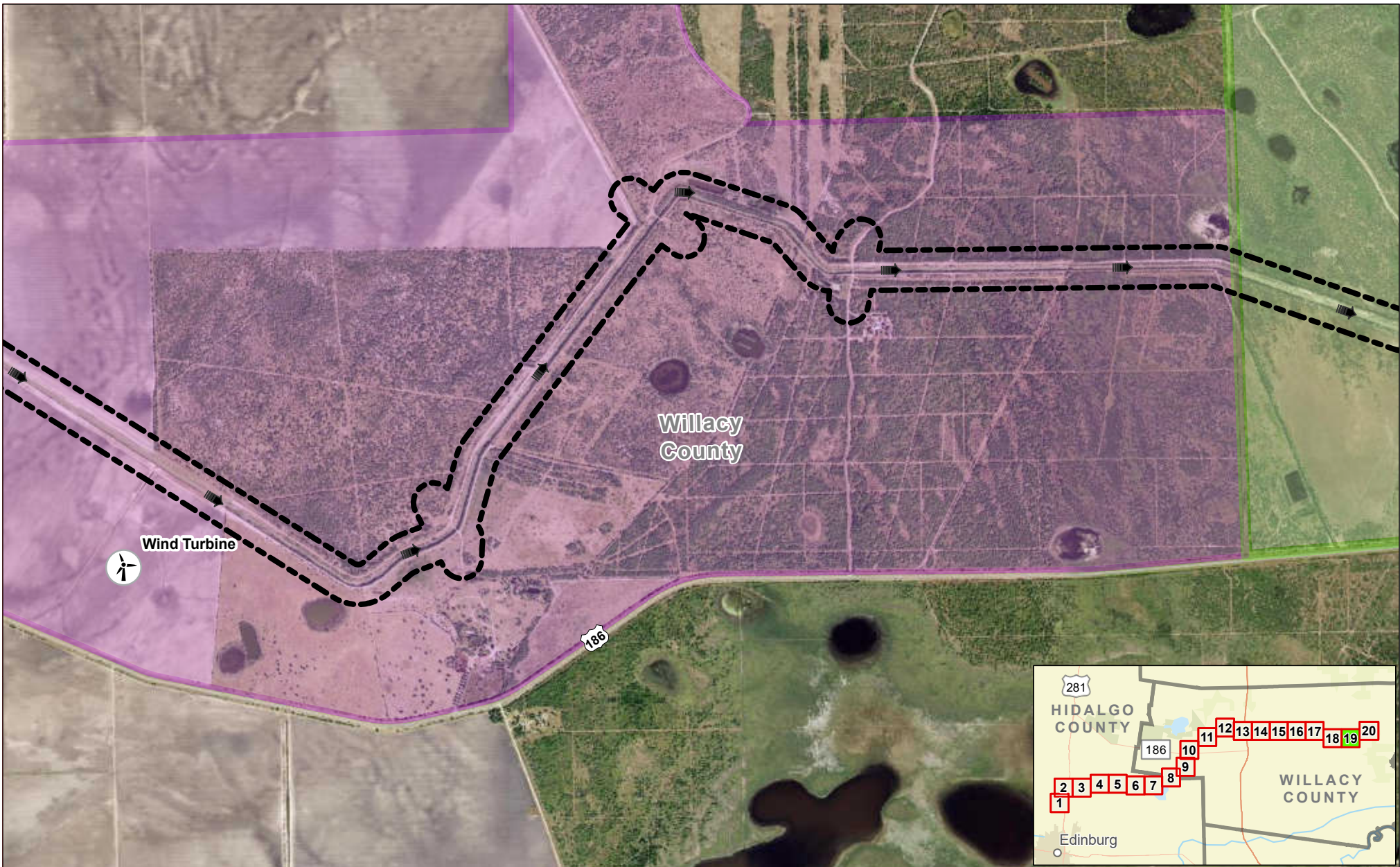
US Feet



Exhibit 17 Alternative 2 Constraints Map Sheet 18 of 20 Raymondville Drain Project

Author : Joel F. Aguirre	Updated : 12/14/2023
DISCLAIMER: RRP Consulting Engineers makes no guarantees as to the accuracy of data used in the construction of this map.	

Path: S:\project\408000_Project\Raymondville\GIS\PDF_Export\Exhibit_Series.aprx



Legend:

- Study Corridor
- Drain Flow
- The East Foundation
- El Sauz Ranch
- Wind Turbine

N

0 1,000 2,000

US Feet

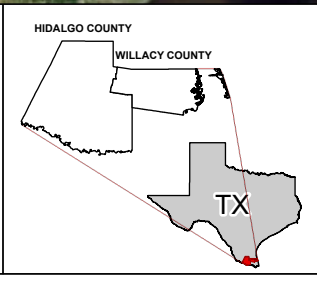
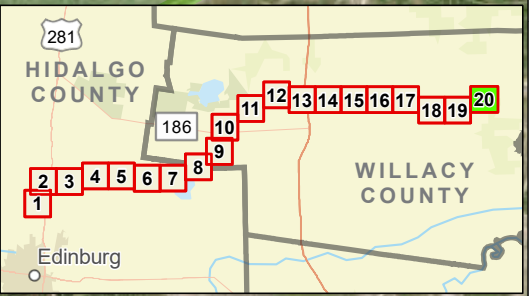
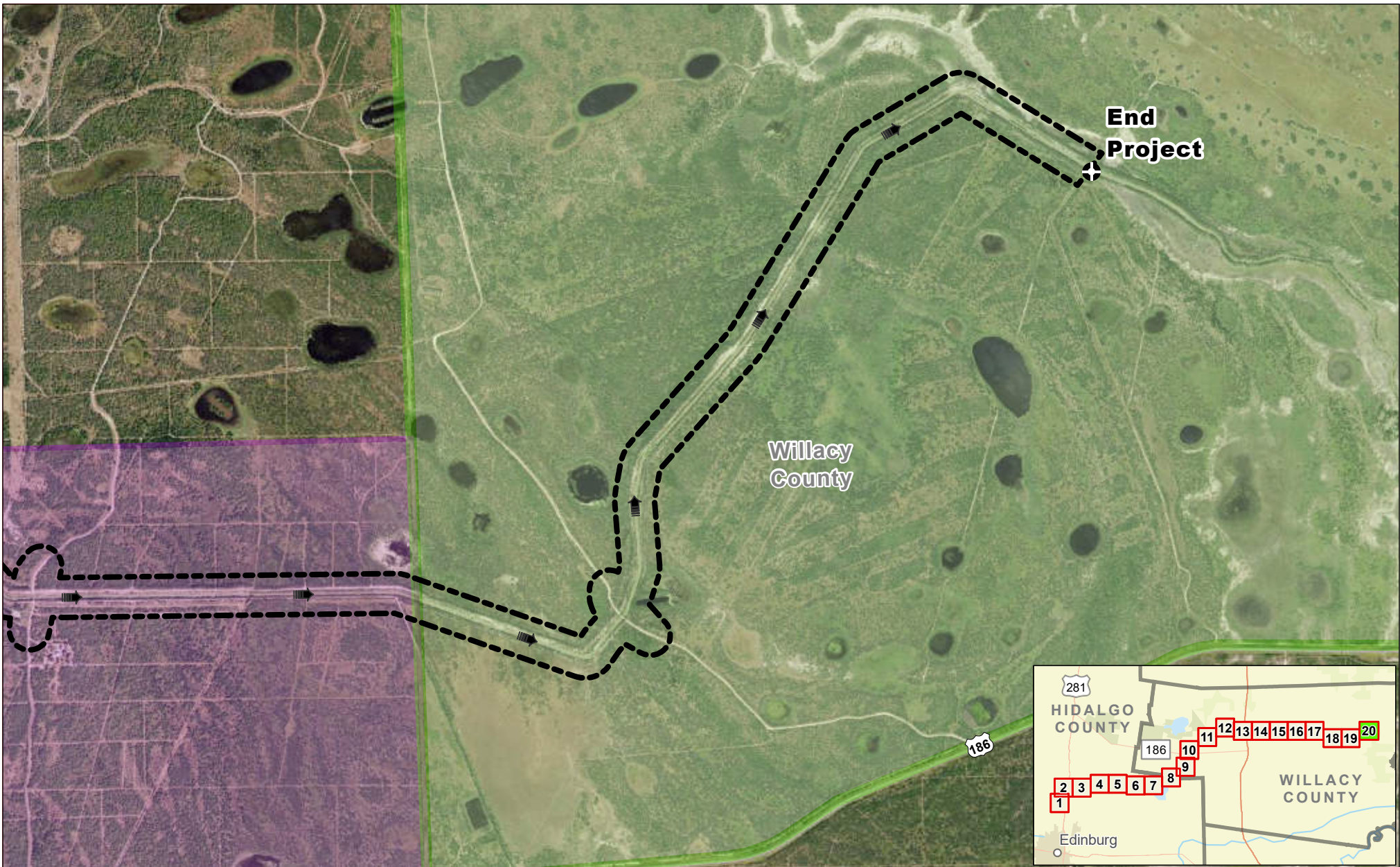


Exhibit 17 Alternative 2 Constraints Map Sheet 19 of 20 Raymondville Drain Project

Author : Joel F. Aguirre Updated : 12/14/2023

DISCLAIMER: RRP Consulting Engineers makes no guarantees as to the accuracy of data used in the construction of this map.

Path: S:\project\440800_Project\Raymondville\GIS\FCP_Encls\Encl_Series.aprx



Legend:

- Study Corridor
- Drain Flow
- The East Foundation
- El Sauz Ranch

N

0 1,000 2,000

US Feet

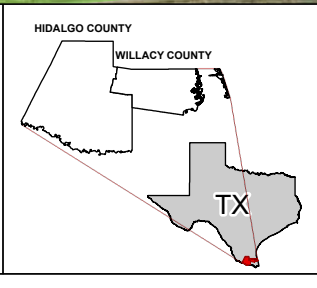


Exhibit 17 Alternative 2 Constraints Map Sheet 20 of 20 Raymondville Drain Project

Author : Joel F. Aguirre	Updated : 12/14/2023
--------------------------	----------------------

DISCLAIMER: RRP Consulting Engineers makes no guarantees as to the accuracy of data used in the construction of this map.

Path: S:\project\440800_ProjectInventory\GIS\PDF_Books\End_Series.aprx